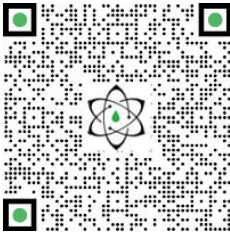




TECHNICAL REPORT

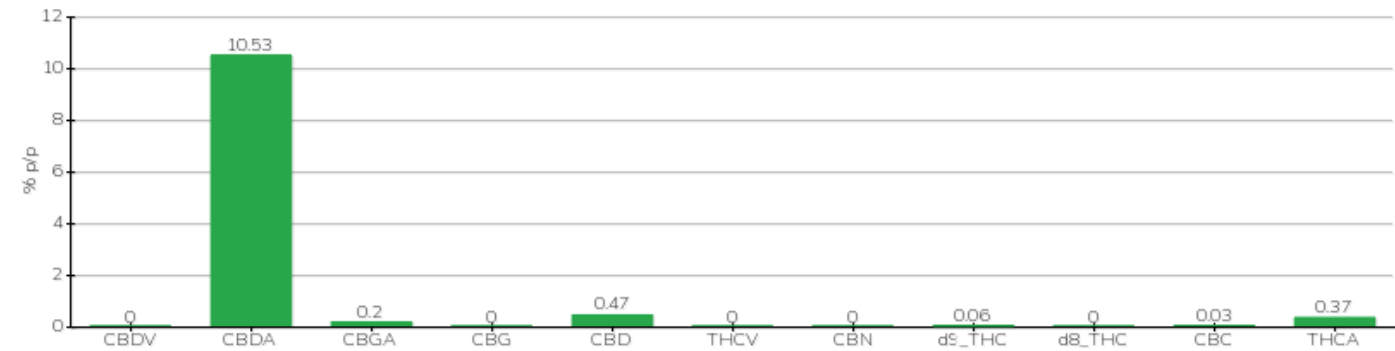
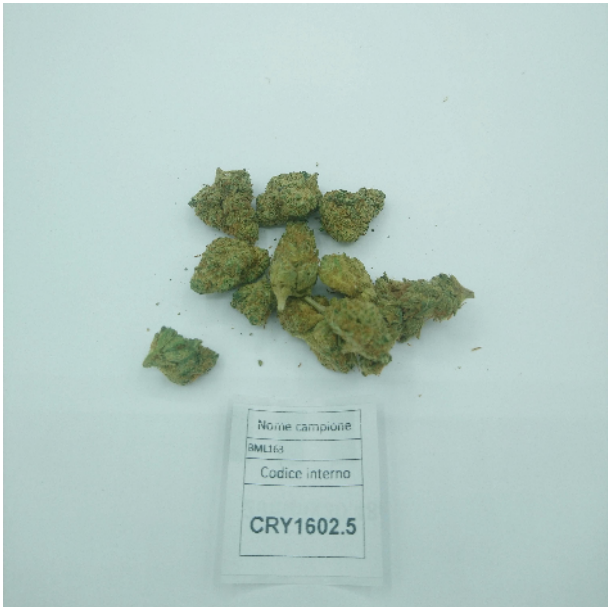


Committente	Crystal srl	Etichetta	BML163
Data accettazione	16/02/2024	Tipologia campione	infiorescenza
Data analisi	16/02/2024	varietà	Tisza
Codice riferimento interno	CRY1602.5	N. Cartellino	B30759201900002
Metodica analitica	HPLC - HS - Rev.2	Campionamento	a cura del cliente
Lotto			

Note

Parametro	% p/p	Metodo
CBDV	<0.01%	HPLC-UV
CBDA	10.53%	HPLC-UV
CBGA	0.20%	HPLC-UV
CBG	<0.01%	HPLC-UV
CBD	0.47%	HPLC-UV
THCV	<0.01%	HPLC-UV
CBN	<0.01%	HPLC-UV
d9_THC	0.06%	HPLC-UV
d8_THC	<0.01%	HPLC-UV
CBC	0.03%	HPLC-UV
THCA	0.37%	HPLC-UV
CBD TOTALE	9.71%	CALCOLATO
CBG TOTALE	0.18%	CALCOLATO
THC TOTALE	0.38%	CALCOLATO

CAMPIONE ANALIZZATO: Tisza(3.00gr)



Pineto 19/02/2024